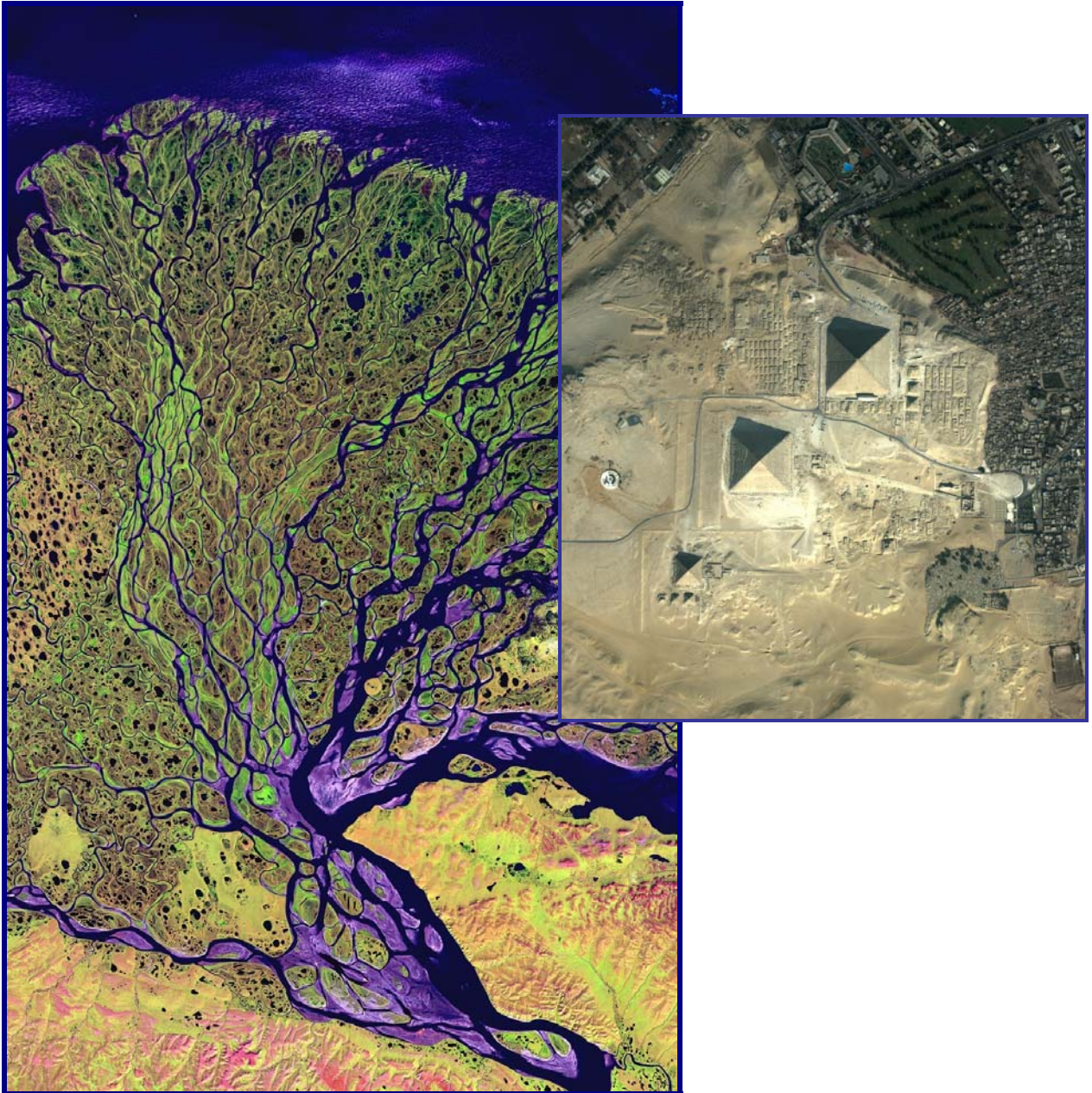


## Earth from Space | Exhibitor Handbook

Created by the Smithsonian Institution Traveling Exhibition Service



Above: Lena Delta, Russian Siberia; Landsat 7 satellite, July 2000  
Right: Great Pyramids, Cairo, Egypt; QuickBird satellite, February 2002

## SUMMER/FALL 2008

The Smithsonian Institution Traveling Exhibition Service (SITES) and the United States Geological Survey (USGS) are delighted that your organization has received ***Earth from Space***, a poster set that can be used by teachers, libraries, and museums in creative ways to convey the beauty and mystery of our planet as seen from the lenses of orbiting space satellites.

This handbook provides information about mounting, installing, and promoting the exhibition. If you're a museum, it also gives you ideas on how to augment the posters with materials from your own collection. If you're a school or library, it provides links to valuable curriculum materials. Please share this information with colleagues who will be working with this exhibition.

Please take a few moments to complete our short participant survey online. Your comments are tremendously helpful in planning future exhibitions. Digital images of the posters installed at your site and/or images of visitors interacting with the prints are greatly appreciated. We would also encourage you to send us copies of any publicity materials you receive (i.e. newspaper articles).

We look forward to having this innovative program at your institution. If you have any questions about the posters or how to present them, please contact SITES project director Devra Wexler at 202.633.3114 or [wexlerd@si.edu](mailto:wexlerd@si.edu).

We look forward to hearing about your success with ***Earth from Space***.

Sincerely,

A handwritten signature in black ink, appearing to read "Anna R. Cohn", with a long horizontal flourish extending to the right.

Anna R. Cohn  
Director  
Smithsonian Institution  
Traveling Exhibition Service

## **TABLE OF CONTENTS**

Online Resources . . . . .	4
Poster Checklist . . . . .	5
Mounting and Installation . . . . .	6
Public Relations . . . . .	7
Programming . . . . .	15
Curriculum Materials . . . . .	30
Additional Resources . . . . .	31
Online Survey Sample . . . . .	34
Exhibition Collaborators . . . . .	37

## ONLINE RESOURCES

The **poster website** includes the following resources:

<http://www.sites.si.edu/exhibitions/exhibits/earthFromSpacePosters/index.htm>

Feel free to download:

- Poster Designs
- Exhibition Script
- Participant Survey
- Exhibitor Handbook (press release and images as well as curriculum materials)

The *Earth from Space* **exhibition website** includes the following resources:

<http://www.earthfromspace.si.edu>

Feel free to explore:

- Additional Curriculum Materials
- “Zoomable” satellite images
- Maps and geographic context
- Information about remote sensing
- Images of space satellites

To download press images:

<ftp://sitesquest:9getfiles9@ftp.si.edu>

If you are prompted, enter the username [sitesquest] and password [9getfiles9]. The files are located within the *Earth from Space POSTER EXHIBIT* folder. If you have problems accessing the site, check your web browser to be sure that “Passive FTP” is enabled.

## **POSTER CHECKLIST**

Poster 1	View of the Earth: Title poster
Poster 2	Remote Sensing
Poster 3	Mount Taranaki, New Zealand
Poster 4	Florida Everglades
Poster 5	Life in the Caribbean
Poster 6	California Forest Fires
Poster 7	Global Weather and Storms
Poster 8	Changing Seasons at the Bering Sea
Poster 9	Lena Delta, Siberia
Poster 10	Rising Floodwaters, China
Poster 11	Mountains and Dry Valleys
Poster 12	Mount Kenya
Poster 13	McCartys Lava Flow, New Mexico
Poster 14	Ocean of Sand
Poster 15	San Francisco, California
Poster 16	Cairo, Egypt
Poster 17	Agriculture Dominating the Land
Poster 18	New York City
Poster 19	Deforestation in the Amazon
Poster 20	Earth at Night

## **MOUNTING AND INSTALLATION**

The 20 posters in this exhibition are printed in full color on glossy 80# cover stock. Each poster measures 28.5" x 19.5." Your mounting options range from framing, to dry-mounting, to thumb-tacking them to your walls. The method you choose should reflect your anticipated use of the posters as well as your budget.

### Framing

Standard metal-section frames come in a variety of lengths. Do-it-yourself framing could cost as little as \$35 from a retail store, while custom-made frames in wood or enameled metal may cost up to \$100 each. If you plan to circulate framed posters, make certain to use acrylic glazing rather than glass. You may also frame dry-mounted posters without any glazing.

### Dry Mounting

Museums, schools, photography studios, sign shops, and commercial framing shops are equipped with dry-mounting presses. Similar to large irons, these presses use a heat-activated, pressure-sensitive tissue to form a permanent bond between graphic material and a backing material—illustration board, Fomecor, or other lightweight substrate. If you use a flexible substrate, you may wish to mount a piece of paper on the back of the substrate to prevent warping.

### Film Lamination

You may wish to permanently protect the posters from the elements by laminating them, especially if they will be shown outdoors or moved frequently. Nearly every city will have "laminating" listed in the yellow pages of its telephone book. In addition, many school systems may have laminators or receive special rates from contract companies.

### Hanging

Any frame that you choose will have suggested hanging hardware. You may also attach dry-mounted or laminated posters to your walls using double-sided or foam tape, escutcheon pins or thumb tacks, or a hanging wire affixed to the back of the posters.

### Installation

Although you are free to hang the posters in any order that works for your institution, we suggest the arrangement shown in the Exhibition Checklist.

## PUBLIC RELATIONS

*Earth from Space* will provide you with many excellent opportunities for media coverage and promotional activities. This section of the handbook is designed to make your job in promoting the exhibition as easy as possible using strategies that have been effective for past Smithsonian Institution Traveling Exhibition Service (SITES) exhibitions. As you use these PR materials, please stay in touch so that we can provide you with the support and information you need to make your showing a great success.

If you have any questions about any part of this section, please contact Jennifer Schommer, SITES Assistant Director of Public Relations, at 202.633.3121 or [schommerj@si.edu](mailto:schommerj@si.edu).

### Exhibition Credit Line

All exhibition-related promotional materials must contain the exhibition credit line: *Earth from Space* is brought to you courtesy of the United States Geological Survey and the Smithsonian Institution.

Examples of such materials include (but are not limited to) invitations, banners, signage, posters, public program brochures, postcards, and printed, video, internet, and audio announcements.

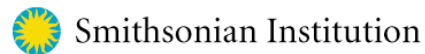
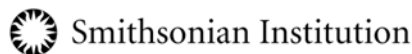
### Logo Guidelines

The SITES and USGS logos must appear on all publicity materials including (but not limited to) press releases, flyers, poster copy, press preview invitations, scripts of public service announcements, advertising copy, banners, posters, etc. The SITES and USGS logos must be visually equivalent in size and at least the same size as that of your institution.

These logos may be downloaded from the two sites referenced on page 4.

### Smithsonian Logo Guidelines

You may use the logo either in black and white or in color. The Pantone colors used in the color emblem are Blue 3135C and UC (uncoated) and Yellow 116C and 109UC. The font for the lettering is Minion. Color specifications for other uses are available at <http://www.si.edu/silogo/>.



- The Sunburst is made up of the sun and the circular sky background. Do not use the Sunburst without the accompanying logotype.

- The Sunburst itself should *never* be black. The circular sky background may be printed in black.
- When reversed out of a dark background and used without the “sky,” the sun will be white. If a light-colored stock or background is used, the black-and-white version must be used. If the background is dark, the white sun alone must be used.
- When printing the black-and-white version of the logo on colored paper, the sun will be the color of the paper on which it is printed.

### USGS Logo



### Press Images

For press, marketing, and web purposes, several images have been selected to represent the exhibition. You and your press contacts may download these images, a caption sheet, and the exhibition title block from the two sites referenced on page 4.

Please make sure that all images used are properly credited, per the instructions on Press Images & Captions on page 12.

Please note that large digital image files such as the ones on the site are often too large to send as e-mail attachments.

### Publicity Ideas

When planning your media relations strategy, remember that the SITES Public Relations Office is a resource. We are happy to offer strategies that we have seen work at other venues or simply to brainstorm what types of promotions might work best in your region. Consider some of the following suggestions as you prepare your media campaign.

### Newspapers

A suggested press release, information about downloading digital images, and links to general background material are included in this handbook. In addition to sending the press release to your area newspapers, consider the following ideas:

- Send the news release to the attention of the editor or reporter who has the most interest in this information.
- Ask the editor of your daily newspaper to place an article or photographs in the Sunday photo magazine or supplemental section. These sections often reach more people than a weekly paper.
- Contact the state Associated Press and United Press International wire services. Information of statewide interest can be telephoned in and will be

carried in newspapers throughout the state. Wire service offices are generally located in the state capital and in large metropolitan areas.

### Radio and Television

Radio and television stations will air public service announcements (PSAs), written or taped. If you have a small exhibition budget, send local stations a written 30-second media spot announcement. For example:

[*Your Venue Name*] invites area residents to a special exhibition—*Earth from Space*. The exhibition is brought to you courtesy of the United States Geological Survey (USGS) and the Smithsonian Institution.

The exhibition opens on [Date] and is on view through [Date]. [Your Venue Name] is open [Days & Times].

- Invite the media to cover special events and public programs. These are community news items that bring attention to your organization and the exhibition.

### Local Calendars of Events

In addition to contacting your local newspaper editors and feature reporters, ask the Calendar editors to include a short item and photograph on the exhibition.

- Area colleges and universities have newspapers that can print both calendar entries and articles on the exhibition.
- Local chambers of commerce, visitors' bureaus, and convention centers have monthly publications that list local community activities.

## Sample Press Release

[DATE]

[VENUE] Presents Smithsonian Poster Exhibit Looking at Satellite Imagery

**Media only:** [Contact Name and Phone Number],

### **[VENUE NAME] to Host Smithsonian *Earth from Space* Exhibition**

Beginning this fall, students across the country will be able to experience a Smithsonian exhibition in their own schools. The Smithsonian Institution Traveling Exhibition Service, in partnership with the U.S. Geological Survey, is providing a free poster version of the popular exhibition *Earth from Space* to more than 700 schools, universities, libraries, community centers and other venues.

*The exhibition will be on view at [VENUE NAME] [DATE through DATE].*

Or

*[VENUE NAME] has received a copy of Earth from Space and educators are eager to integrate the exhibition into the fall curriculum. [Quote from educator]*

The 20-poster set features beautifully detailed satellite images of the planet—from the swirling arms of a massive hurricane and the grid-like pattern of Kansas farmland to the triangular shadows cast by the Great Pyramids and the sinuous channels entering the Arctic Ocean. *Earth from Space* illustrates how satellite imagery is gathered and used to expand mankind's understanding of life on Earth. It also explores the remote-sensing technology used to gather the images and describes the individual satellites whose images are on display.

“The Smithsonian is proud to be able to share illuminating scholarship from the National Air and Space Museum in a format that allows for extraordinarily widespread distribution,” said Anna Cohn, SITES director. “*Earth from Space* inspires dreams and discovery, and while the photographs were taken from far away, they can launch learning opportunities about our lives here on earth.”

The poster exhibition was born of the popular and award-winning museum exhibition of the same title that premiered November 2006 at the National Air and Space Museum. In 2007, *Earth from Space* won a U.S. Geological Survey communications award for science content.

The images provide clues about the nature of our planet and offer teachers opportunities to engage students in a broad array of science topics, including geography, environmental studies, ecology, oceanography and meteorology.

An educational companion Web site, [www.earthfromspace.si.edu](http://www.earthfromspace.si.edu), contains an online version of the exhibition, and additional images and information. It also provides numerous educational resources, including lesson plans, classroom activities, Web site links and available publications.



*Earth from Space* was developed by the Center for Earth and Planetary Studies at the National Air and Space Museum, in collaboration with SITES. Andrew Johnston, a geographer at the center and author of "Earth from Space" (Firefly Books, 2004), is the exhibition's curator.




SITES has been sharing the wealth of Smithsonian collections and research programs with millions of people outside Washington, D.C., for more than 50 years. SITES connects Americans to their shared cultural heritage through a wide range of exhibitions about art, science and history, which are shown wherever people live, work and play. Exhibition descriptions and tour schedules are available at [www.sites.si.edu](http://www.sites.si.edu).


# # #

**Press Images and Captions**

NOTE: Each image contains a brief caption followed by the technical specification of the satellite and the image credit.

	<p><b>Lena Delta</b></p> <p>The Lena River flows north for over 2,800 miles through Russian Siberia to the Arctic Ocean. As the river enters the Laptev Sea, it divides into many channels to form a biologically rich delta.</p> <p>Landsat 7 satellite, July 2000 USGS, EROS Data Center</p>
	<p><b>California Forest Fires</b></p> <p>At least five groups of forest fires, some of the largest California had ever seen, can be seen burning in this image. Dry winds blowing off the Mojave Desert, known as the Santa Ana winds, carried these fires toward populated areas.</p> <p>MODIS sensor on Terra satellite, October 2003</p> <p>Jacques Desclotres, MODIS Land Rapid Response Team, NASA/GSFC</p>

	<p><b>San Francisco</b></p> <p>The San Francisco-Oakland Bay Bridge is visible as it crosses San Francisco Bay, one of the world's great harbors. Detailed, high-resolution images reveal buildings, automobiles, and other evidence of densely developed urban centers.</p> <p>IKONOS satellite by GeoEye, October 1999</p>
	<p><b>Pyramids</b></p> <p>The Giza Pyramids were constructed around 2500 BC as monumental tombs. The largest and oldest pyramid was originally over 480 feet high and is made of 5.7 million tons of limestone.</p> <p>QuickBird satellite, February 2002 DigitalGlobe</p>
	<p><b>New York</b></p> <p>Bridges, tunnels and subways connect Manhattan and the other boroughs. More than 10 million people live in the area captured in this view. Landsat images, such as this one, are used to map the extent of urbanization on the earth's surface.</p>

	<p>Landsat 7 satellite, April 2002</p> <p>USGS, EROS Data Center, National Air and Space Museum</p>
 <p>Images may be downloaded from the two sites referenced on page 4.</p>	<p><b>Earth at Night</b></p> <p>Streetlights are the source of most of the light seen in this image, but petroleum fires also contribute. A dark blue layer was added to the image to show where land masses are located. European cities are especially bright, and in Egypt, lights glitter along the Nile. Such images have been used to estimate global urban populations.</p> <p>DMSP satellites, data collected 1994-1995</p> <p>Marc Imhoff, Craig Mayhew, Robert Simmon NASA/GSFC; Christopher Elvidge NOAA/NGDC</p>

## PROGRAMMING

The following information is provided to assist in enhancing the educational mission of *Earth from Space*. We hope this material will inform your institution's educational initiatives, public programs, handouts, etc.

Local speakers with USGS, NASA, or air and space museum experience:

Your best source of speakers and regional information is your USGS regional office, listed below.

### Making the Local Connection

While *Earth from Space* will provide your visitors a thorough introduction to the topic of satellite imagery, the 20 posters obviously cannot touch on the experiences of every region of the country. That's where you come in. While each organization's specialty and collections are different, it is likely that you may have additional content that you can share with your visitors.

If your institution doesn't hold such materials, contact your local USGS office to see if you may borrow or reproduce satellite images of your area. To find available resources in your area visit, [http://www.usgs.gov/contact\\_us/](http://www.usgs.gov/contact_us/)

These offices can provide you with materials and other resources, including speakers for educational programming at your venue. Please contact them directly to arrange for such assistance. Be sure to inform them that you are a venue hosting the SITES *Earth from Space* poster exhibition.

#### Alabama

- [Water Science Center - Montgomery](#)  
AUM TechnaCenter  
75 TechnaCenter Drive  
Montgomery, AL 36117  
Phone: (334) 395-4120  
Fax: (334) 395-4168
- USGS Alabama Cooperative Fish and Wildlife Research Unit  
Email: [coop-unit@auburn.edu](mailto:coop-unit@auburn.edu)  
108 White Smith Hall  
Auburn University

Auburn, AL 36849-5418  
Phone: 334-844-4796  
Fax: 334-887-4509

#### Alaska

- Alaska Science Center  
4230 University Dr., Suite 201  
Anchorage, AK 99508-4664  
Phone: (907) 786-7000  
Fax: (907) 786-7150

#### Arizona

- U.S. Geological Survey - Arizona Water Science Center  
Email: [dc\\_az@usgs.gov](mailto:dc_az@usgs.gov)  
Water Resources Division  
520 N. Park Avenue, Suite 221  
Tucson, AZ 85719  
Phone: (520) 670-6671  
Fax: (520) 670-5592
- Southwest Biological Science Center  
2255 N. Gemini Drive  
Flagstaff, AZ 86001  
Phone: (928) 556-7094  
Fax: (928) 556-7092
- Arizona Cooperative Fish and Wildlife Research Unit  
Email: [azcoopunit@ag.arizona.edu](mailto:azcoopunit@ag.arizona.edu)  
University of Arizona  
104 Biological Sciences East Building  
Tucson, Arizona 85721  
Phone: 520-621-1959  
Fax: 520-621-8801

## Arkansas

- [Arkansas Water Science Center](#)  
Email: [dc\\_ar@usgs.gov](mailto:dc_ar@usgs.gov)  
401 Hardin Rd.  
Little Rock, AR 72211-3528  
Phone: (501) 228-3600  
Fax: (501) 228-3601
- [USGS Arkansas Cooperative Fish and Wildlife Research Unit](#)  
Department of Biological Sciences SCEN 632  
Email: [coopunit@uark.edu](mailto:coopunit@uark.edu)  
University of Arkansas  
Fayetteville, AR 72701  
Phone: 479-575-6709  
Fax: 479-575-3330

## California

- [California Water Science Center](#)  
Email: [dc\\_ca@usgs.gov](mailto:dc_ca@usgs.gov)  
Placer Hall  
6000 J Street  
Sacramento, CA 95819-6129  
Phone: (916) 278-3000  
Fax: (916) 278-3070
- USGS - Long Valley Observatory  
1934 Meridian Blvd  
Mammoth Lakes, CA 93546
- USGS Western Region Offices  
Menlo Park Campus, Bldg. 3  
345 Middlefield Road  
Menlo Park, CA 94025  
Phone: (650) 853-8300
- Western Ecological Research Center  
3020 State University Drive East  
Modoc Hall, Room 3006  
Sacramento, California 95819  
Phone: (916) 278-9485  
Fax: (916) 278-9475

- [California Cooperative Fish Research Unit](#)  
Email: [cuca@humboldt.edu](mailto:cuca@humboldt.edu)  
Humboldt State University  
Wildlife & Fisheries Bldg., Rm. 212  
1 Harpst Street  
Arcata, CA 95521  
Phone: 707-826-3268  
Fax: 707-826-3269

## Colorado

- USGS Central Region Offices,  
Main Switchboard  
Denver Federal Center  
Email: [dc\\_co@usgs.gov](mailto:dc_co@usgs.gov)

West 6th Ave. & Kipling St.  
DFC Bldg. 810  
Lakewood, CO 80225  
Phone: (303) 236-5900

- BRD Resources Central  
Regional Office  
Denver Federal Center  
West 6th Ave. & Kipling St.  
DFC Bldg. 20  
Lakewood, CO 80225-0046  
Phone: (303) 236-2730  
Fax: (303) 236-2733
- Colorado Water Science Center  
Bldg. 53, Denver Federal Center  
Mail Stop 415, Box 25046  
Lakewood, CO 80225-0046  
Phone: (303) 236-4882  
Fax: (303) 236-4912
- Fort Collins Science Center  
2150 Centre Avenue, Bldg C  
Fort Collins, CO 80526-8118  
Phone: (970) 226-9011  
Fax: (970) 226-9230
- [Colorado Cooperative Fish and  
Wildlife Research Unit](#)  
Email:  
[coopunit@cnr.colostate.edu](mailto:coopunit@cnr.colostate.edu)  
Colorado State University  
201 Wager Building  
1484 Campus Delivery  
Ft. Collins, CO 80523-1484  
Phone: 970-491-5396  
Fax: 970-491-1413
- [USGS - Rocky Mountain  
Geographic Science Center](#)  
Denver Federal Center  
West 6th Ave. & Kipling St.  
DFC Bldg. 810  
Lakewood, CO 80225

## Delaware

- Delaware Water Science Center  
Email: [dc\\_de@usgs.gov](mailto:dc_de@usgs.gov)  
1289 McD Dr.  
Dover, DE 19901-4907  
Phone: (302) 734-2506  
Fax: (302) 734-2964

## District of Columbia

- [Maryland/District of Columbia  
Water Science Center](#)  
Email: [dc\\_md@usgs.gov](mailto:dc_md@usgs.gov)  
8987 Yellow Brick Road  
Baltimore, MD 21237  
Phone: (410) 238-4200  
Fax: (410) 238-4210

## Florida

- Florida Integrated Science  
Center, Orlando  
Email: [GS-FL\\_FISC\\_Center\\_  
Director@usgs.gov](mailto:GS-FL_FISC_Center_Director@usgs.gov) or  
[dc\\_fl@usgs.gov](mailto:dc_fl@usgs.gov)  
12703 Research Parkway  
Orlando, FL 32826  
Phone: (407) 803-5500  
Fax: (407) 803-5501
- Florida Integrated Science  
Center, Ft. Lauderdale  
3110 SW 9th Avenue  
Ft. Lauderdale, FL 33315  
Phone: (954) 377-5900  
Fax: (954) 377-5901
- Florida Integrated Science  
Center, Tampa  
10500 University Center Drive,  
Suite 215  
Tampa, FL 33612-6494  
Phone:(813) 975-8620  
Fax: (813) 975-0839
- Florida Integrated Science  
Center, St. Petersburg

600 Fourth Street South  
St. Petersburg, FL 33701  
Phone: (727) 803-8747  
Fax: (727) 803-2030

- Florida Integrated Science Center, Gainesville West  
7920 NW 71st Street  
Gainesville, FL 32653  
Phone: (352) 378-8181  
Fax: (352) 378-4956
- Florida Integrated Science Center, Crown Pointe  
2201 NW 40th Terrace  
Gainesville, FL 32605  
Phone: (352) 378-8181  
Fax: (352) 374-8080  
Admin Fax: (352) 373-5763
- Florida Integrated Science Center, Millhopper Oaks  
2251 NW 41 Street, Suite D  
Gainesville, FL 32606  
Phone: (352) 378-8181
- Florida Integrated Science Center, Tallahassee  
2010 Levy Avenue  
Tallahassee, FL 32310  
Phone: (850) 942-9500  
Fax: (850) 942-9521
- [USGS Florida Cooperative Fish and Wildlife Research Unit](#)  
Email: [coop@wec.ufl.edu](mailto:coop@wec.ufl.edu)  
Box 110485  
Building 810  
University of Florida  
Gainesville, FL 32611-0485  
Phone: 352-392-1861  
Fax: 352-846-0841

## Georgia

- [Georgia Water Science Center](#)  
Email: [dc\\_ga@usgs.gov](mailto:dc_ga@usgs.gov)  
Peachtree Business Center,  
Suite 130  
3039 Amwiler Rd.  
Atlanta, GA 30360-2824  
Phone: (770) 903-9100  
Fax: (770) 903-9199
- [USGS Georgia Cooperative Fish and Wildlife Research Unit](#)  
Email:  
[coopunit@smokey.forestry.uga.edu](mailto:coopunit@smokey.forestry.uga.edu)  
DB Warnell School of Forest Resources  
University of Georgia  
Athens, Georgia 30602-2152  
Phone: 706-542-5260  
Fax: 706-542-8356

## Hawaii

- Hawaii Water Science Center  
Email: [dc\\_hi@usgs.gov](mailto:dc_hi@usgs.gov)  
677 Ala Moana Blvd., Suite 415  
Honolulu, HI 96813  
Phone: (808) 587-2405  
Fax: (808) 587-2401
- Hawaiian Volcano Observatory  
Hawaii Volcanoes National Park  
Hawaii National Park, HI 96718-0051  
Phone: (808) 985-6000  
Fax: (808) 985-6004

## Idaho

- Boise Water Science Center  
Email: [dc\\_id@usgs.gov](mailto:dc_id@usgs.gov)  
230 Collins Rd.  
Boise, ID 83702-4520  
Telephone: (208) 387-1300  
Fax: (208) 387-1372

- [Idaho Cooperative Fish and Wildlife Research Unit](#)  
Email: [jdcfwru@uidaho.edu](mailto:jdcfwru@uidaho.edu)  
College of Natural Resources,  
Room 103, 6th and Line  
P O Box 44-1141  
Moscow, ID 83844-1141  
Phone: 208-885-2750  
Fax: 208-885-9080

## Illinois

- [Illinois Water Science Center](#)  
Email: [dc\\_il@usgs.gov](mailto:dc_il@usgs.gov)  
1201 W. University Ave., Suite  
100  
Urbana, IL 61801  
Phone: (217) 344-0037  
Fax: (217) 344-0082

## Indiana

- [Indiana Water Science Center](#)  
Email: [dc\\_in@usgs.gov](mailto:dc_in@usgs.gov)  
5957 Lakeside Blvd.  
Indianapolis, IN 46278-1996  
Phone: (317) 290-3333  
Fax: (317) 290-3313

## Iowa

- [Iowa Water Science Center](#)  
Email: [dc\\_ia@usgs.gov](mailto:dc_ia@usgs.gov)  
P.O. Box 1230  
Iowa City, IA 52244  
Phone: (319) 337-4191  
Fax: (319) 358-3606
- [USGS Iowa Cooperative Fish and Wildlife Research Unit](#)  
Email: [coopunit@iastate.edu](mailto:coopunit@iastate.edu)

11 Science II  
Iowa State University  
Ames, IA 50011-3221  
Phone: 515-294-3056  
Fax: 515-294-5468

## Kansas

- [Kansas Water Science Center](#)  
Email: [dc\\_ks@usgs.gov](mailto:dc_ks@usgs.gov)  
4821 Quail Crest Place  
Lawrence, KS 66049  
Phone: (785) 842-9909 or (800)  
234-0523  
Fax: (785) 842-3500
- [USGS Kansas Cooperative Fish and Wildlife Research Unit](#)  
Email: [kscfwru@ksu.edu](mailto:kscfwru@ksu.edu)  
205 Leasure Hall  
Kansas State University  
Phone: 785-532-6070  
Fax: 785-532-7159

## Kentucky

- [Kentucky Water Science Center](#)  
Email: [dc\\_ky@usgs.gov](mailto:dc_ky@usgs.gov)  
USGS Building  
9818 Bluegrass Parkway  
Louisville, KY 40299  
Phone: (502) 493-1900  
Fax: (502) 493-1909

## Louisiana

- [Louisiana Water Science Center](#)  
Email: [dc\\_la@usgs.gov](mailto:dc_la@usgs.gov)  
3535 S. Sherwood Forest Blvd.,  
Suite 120  
Baton Rouge, LA 70816  
Phone: (225) 298-5481  
Fax: (225) 298-5490

- National Wetlands Research Center  
700 Cajundome Boulevard  
Lafayette, Louisiana 70506  
Phone: 337-266-8500
- USGS Louisiana Cooperative Fish and Wildlife Research Unit  
School of Renewable Natural Resources  
Email: [lacoop@lsu.edu](mailto:lacoop@lsu.edu)  
124 Forestry Wildlife Fisheries Building  
Louisiana State University  
Baton Rouge, LA 70803  
Phone: 225-578-4179  
Fax: 225-578-4144

## Maine

- [Maine Water Science Center](#)  
Email: [dc\\_me@usgs.gov](mailto:dc_me@usgs.gov)  
USGS Building  
196 Whitten Rd.  
Augusta, ME 04330  
Phone: (207) 622-8201  
Fax: (207) 622-8204
- USGS Maine Cooperative Fish and Wildlife Research Unit  
Email:  
[usgs@umenfa.maine.edu](mailto:usgs@umenfa.maine.edu)  
5755 Nutting Hall, Room 258  
University of Maine  
Orono, ME 04469-5755  
Phone: 207-581-2870  
Fax: 207-581-2858

## Maryland

- [Maryland/District of Columbia Water Science Center](#)  
Email: [dc\\_md@usgs.gov](mailto:dc_md@usgs.gov)  
8987 Yellow Brick Road  
Baltimore, MD 21237  
Phone: (410) 238-4200

Fax: (410) 238-4210

- Patuxent Wildlife Research Center  
12100 Beech Forest Road  
Suite 4039  
Laurel, MD 20708-4038  
Phone: (301) 497-5500  
FAX: (301) 497-5505
- [USGS Maryland Cooperative Fish and Wildlife Research Unit](#)  
Email:  
[mdcoopunit@mail.umes.edu](mailto:mdcoopunit@mail.umes.edu)  
University of Maryland Eastern Shore  
Trigg Hall, Room 1120  
Princess Anne, MD 21853  
Phone: 410-651-7663  
Fax: 410-651-7662

## Massachusetts

- [Massachusetts Water Science Center](#)  
Email: [dc\\_ma@usgs.gov](mailto:dc_ma@usgs.gov)  
10 Bearfoot Road  
Northborough, MA 01532  
Phone: (508) 490-5000  
Fax: (508) 490-5068
- [Woods Hole Science Center](#)  
384 Woods Hole Road  
Gosnold Building  
Woods Hole, MA 02543-1598  
Phone: (508) 548-8700  
Fax: (508) 457-2310
- USGS Massachusetts Cooperative Fish and Wildlife Research Unit  
Email:  
[mcoopunit@forwild.umass.edu](mailto:mcoopunit@forwild.umass.edu)  
Holdsworth Natural Research Center  
University of Massachusetts

Amherst, MA 01003  
Phone: 413-545-0398  
Fax: 413-545-4358

## Michigan

- [Michigan Water Science Center](#)  
Email: [dc\\_mi@usgs.gov](mailto:dc_mi@usgs.gov)  
6520 Mercantile Way, Suite 5  
Lansing, MI 48911-5991  
Phone: (517) 887-8903  
Fax: (517) 887-8937
- [Great Lakes Science Center](#)  
1451 Green Road  
Ann Arbor, MI 48105  
Phone: (734) 994-3331  
Fax: (734) 994-8780

## Minnesota

- [Minnesota Water Science Center](#)  
Email: [dc\\_mn@usgs.gov](mailto:dc_mn@usgs.gov)  
Mounds View Park  
2280 Woodale Dr.  
Mounds View, MN 55112  
Phone: (763) 783-3100  
Fax: (763) 783-3103
- [USGS Minnesota Cooperative Fish and Wildlife Research Unit](#)  
Email: [coopunit@tc.umn.edu](mailto:coopunit@tc.umn.edu)  
Department of Fisheries,  
Wildlife, and Conservation  
Biology  
University of Minnesota  
200 Hodson Hall  
1980 Folwell Avenue  
St. Paul, Minnesota 55108-6124  
Phone: 612-624-3421  
Fax: 612-625-5299

## Mississippi

- [Mississippi Water Science Center](#)  
Email: [dc\\_ms@usgs.gov](mailto:dc_ms@usgs.gov)  
Geological/Aphis  
308 South Airport Road  
Jackson, MS 39208-6649  
Phone: (601) 933-2940  
Fax: (601) 933-2901
- USGS Mississippi Cooperative Fish and Wildlife Research Unit  
Email: [mscoopunit@cfr.msstate.edu](mailto:mscoopunit@cfr.msstate.edu)  
Mail Stop 9691  
Mississippi State University  
Mississippi State, MS 39762  
Phone: 662-325-2643  
Fax: 662-325-8726

## Missouri

- [Missouri Water Science Center](#)  
Email: [dc\\_mo@usgs.gov](mailto:dc_mo@usgs.gov)  
USGS Building  
1400 Independence Road, Mail  
Stop 200  
Rolla, MO 65401  
Phone: (573) 308-3667  
Fax: (573) 308-3645
- [Columbia Environmental Research Center](#)  
4200 New Haven Road  
Columbia, MO 65201  
Phone: (573) 875-5399  
Fax: (573) 876-1896
- [National Geospatial Technical Operations Center \(NGTOC\) III](#)  
USGS Building  
1400 Independence Road  
Rolla, MO 65401  
Phone: (573) 308-3800  
Fax: (573) 308-3652

- [USGS Missouri Cooperative Fish and Wildlife Research Unit](#)  
Email: [coopunit@missouri.edu](mailto:coopunit@missouri.edu)  
302 Anheuser-Busch Natural Resources Bldg.  
University of Missouri- Columbia  
Columbia, MO 65211-7240  
Phone: 573-882-3634  
Fax: 573-884-5070

Phone: 406-243-5372  
Fax: 406-243-6064

## Nebraska

- [Nebraska Water Science Center](#)  
Email: [dc\\_ne@usgs.gov](mailto:dc_ne@usgs.gov)  
U.S. Geological Survey  
5231 South 19th Street  
Lincoln, NE 68512-1271  
Telephone: (402) 328-4100  
Fax: (402) 437-5139
- [USGS Nebraska Cooperative Fish and Wildlife Research Unit](#)  
Email: [callen3@unl.edu](mailto:callen3@unl.edu)  
University of Nebraska-Lincoln  
103 Miller Hall  
Lincoln, Nebraska 68583-0711  
Phone: 402-472-0449  
Fax: 402-472-2722

## Montana

- [Montana Water Science Center](#)  
Email: [dc\\_mt@usgs.gov](mailto:dc_mt@usgs.gov)  
USGS Building  
3162 Bozeman Avenue  
Helena, MT 59601  
Telephone: (406) 457-5900  
Fax: (406) 457-5990
- Northern Rocky Mountain Science Center  
P.O. BOX 173492, MSU  
Bozeman, MT 59717-3492  
Phone: (406) 994-5304  
Fax: (406) 994-6556
- [Montana Cooperative Fishery Research Unit](#)  
Email: [mtfcoopunit@montana.edu](mailto:mtfcoopunit@montana.edu)  
Montana State University-Bozeman  
Room 301 D Lewis Hall  
P.O. Box 173460  
Bozeman, MT 59717  
Phone: 406-994-4549  
Fax: 406-994-7479
- [Montana Cooperative Wildlife Research Unit](#)  
Email: [mtcwru@umontana.edu](mailto:mtcwru@umontana.edu)  
University of Montana  
Natural Science Building Room 205  
Missoula, MT 59812

## Nevada

- Nevada Water Science Center  
Email: [dc\\_nv@usgs.gov](mailto:dc_nv@usgs.gov)  
2730 N. Deer Run Road  
Carson City, NV 89701  
Phone: (775) 887-7600  
Fax: (775) 887-7621

## New Hampshire

- [New Hampshire/Vermont Water Science Center](#)  
Email: [dc\\_nh@usgs.gov](mailto:dc_nh@usgs.gov)  
361 Commerce Way  
Pembroke, NH 03275-3718  
Phone: (603) 226-7800  
Fax: (603) 226-7894

## New Jersey

- [New Jersey Water Science Center](#)  
Email: [dc\\_nj@usgs.gov](mailto:dc_nj@usgs.gov)  
810 Bear Tavern Rd., Suite 206  
West Trenton, NJ 08628  
Phone: (609) 771-3900  
Fax: (609) 771-3915

Ithaca, NY 14850-1573  
Phone: (607) 266-0217  
Fax: (607) 266-0217

- Coram New York Water Science Center  
2045 Route 112, Bldg. 4  
Coram, NY 11727  
Phone: (631) 736-0783  
Fax: (631) 736-4283

## New Mexico

- [New Mexico Water Science Center](#)  
Email: [dc\\_nm@usgs.gov](mailto:dc_nm@usgs.gov)  
USGS Building  
5338 Montgomery, NE  
Suite 400 (for the District Office)  
Suite 300 (for the Albuquerque Field Office)  
Albuquerque, NM 87109-1311  
Phone: (505) 830-7900  
Fax: (505) 830-7998

- [USGS New York Cooperative Fish and Wildlife Research Unit](#)  
Email: [dnrcru-mailbox@cornell.edu](mailto:dnrcru-mailbox@cornell.edu)  
Fernow Hall, Room 206F  
Cornell University  
Ithaca, NY 14853  
Phone: 607-255-2839  
Fax: 607-255-1895

- [New Mexico Cooperative Fish and Wildlife Research Unit](#)  
Email: [coopunit@nmsu.edu](mailto:coopunit@nmsu.edu)  
Department of Fishery and Wildlife Sciences  
P. O. Box 30003 MSC 4901  
Las Cruces, New Mexico 88003-0003  
Phone: 505-646-6053  
Fax: 505-646-1281

## North Carolina

- [North Carolina Water Science Center](#)  
Email: [dc\\_nc@usgs.gov](mailto:dc_nc@usgs.gov)  
U.S. Geological Survey Building  
3916 Sunset Ridge Road  
Raleigh, NC 27607  
Phone: (919) 571-4000  
Fax: (919) 571-4041

- [USGS North Carolina Cooperative Fish and Wildlife Research Unit](#)  
Email: [nc\\_cfwru@ncsu.edu](mailto:nc_cfwru@ncsu.edu)  
Campus Box 7617  
North Carolina State University  
Raleigh, NC 27695-7617  
Phone: 919-515-2631  
Fax: 919-515-4454

## New York

- [New York Water Science Center](#)  
Email: [dc\\_ny@usgs.gov](mailto:dc_ny@usgs.gov)  
425 Jordan Rd.  
Troy, NY 12180-8349  
Phone: (518) 285-5600  
Fax: (518) 285-5601

- Ithaca New York Water Science Center  
30 Brown Road

## North Dakota

- North Dakota Water Science Center

LK Property Building  
821 East Interstate Ave.  
Bismarck, ND 58501-1199  
Phone: (701) 250-7401  
Fax: (701) 250-7492

- Northern Prairie Wildlife Research Center  
8711 37th Street Southeast  
Jamestown, North Dakota 58401  
Phone: (701) 253-5500  
Fax: (701) 253-5553  
Email: [npwrc@usgs.gov](mailto:npwrc@usgs.gov)

## Ohio

- [Ohio Water Science Center](#)  
Email: [dc\\_oh@usgs.gov](mailto:dc_oh@usgs.gov)  
USGS Building  
6480 Doubletree Avenue  
Columbus, OH 43229-1111  
Phone: (614) 430-7702  
Fax: (614) 430-7777

## Oklahoma

- [Oklahoma Water Science Center](#)  
Email: [dc\\_ok@usgs.gov](mailto:dc_ok@usgs.gov)  
Broadway Executive Park  
202 N.W. 66 St., Building 7  
Oklahoma City, OK 73116  
Phone: (405) 810-4400  
Fax: (405) 843-7712
- USGS Oklahoma Cooperative Fish and Wildlife Research Unit  
Email: [coopunit@okstate.edu](mailto:coopunit@okstate.edu)  
404 Life Sciences West  
Oklahoma State University  
Phone: 405-744-6342  
Fax: 405-744-5006

## Oregon

- [Oregon Water Science Center](#)  
Email: [dc\\_or@usgs.gov](mailto:dc_or@usgs.gov)  
Cherry Blossom Center  
10615 S.E. Cherry Blossom Dr.  
Portland, OR 97216  
Telephone: (503) 251-3200  
Fax: (503) 251-3470
- Forest and Rangeland Ecosystem Science Center (FRESC) HQ Office  
Cannery Mall Building  
777 NW 9th Street, Suite 400  
Corvallis, OR 97330  
Phone: (541) 750-1030  
Fax: (541) 750-1069
- Forest and Rangeland Ecosystem Science Center  
777 NW 9th St., Suite 400  
Corvallis, OR 97330  
Phone: (541) 750-1030  
FAX: (541) 750-1069
- Oregon Cooperative Fish and Wildlife Research Unit  
Email: [orcfwru@oregonstate.edu](mailto:orcfwru@oregonstate.edu)  
Oregon State University  
104 Nash Hall  
Corvallis, OR 97331-4501  
Phone: 541-737-1938  
Fax: 541-737-3590

## Pennsylvania

- [Pennsylvania Water Science Center](#)  
Email: [dc\\_pa@usgs.gov](mailto:dc_pa@usgs.gov)  
215 Limekiln Road  
New Cumberland, PA 17070  
Phone: (717) 730-6900  
Fax: (717) 730-6997

- [USGS Pennsylvania Cooperative Fish and Wildlife Research Unit](#)  
Email: [1-coopunit@lists.psu.edu](mailto:1-coopunit@lists.psu.edu)  
113 Merkle Building  
Pennsylvania State University  
University Park, PA 16802  
Phone: 814-865-4511  
Fax: 814-863-4710

## Rhode Island

- [Rhode Island Water Science Center](#)  
Email: [dc\\_ri@usgs.gov](mailto:dc_ri@usgs.gov)  
275 Promenade St., Suite 150  
Providence, RI 02908  
Phone: (401) 331-9050  
Fax: (401) 331-9062

## South Carolina

- [South Carolina Water Science Center](#)  
Email: [dc\\_sc@usgs.gov](mailto:dc_sc@usgs.gov)  
Stephenson Center  
720 Gracern Rd., Suite 129  
Columbia, SC 29210  
Phone: (803) 750-6109  
Fax: (803) 750-6181
- [USGS South Carolina Cooperative Fish and Wildlife Research Unit](#)  
Email: [SCCOOP-L@clemson.edu](mailto:SCCOOP-L@clemson.edu)  
G-27 Lehotsky Hall  
Department of Aquaculture,  
Fisheries and Wildlife  
Clemson University  
Clemson, SC 29634  
Phone: 864-656-0168  
Fax: 864-656-1034

## South Dakota

- South Dakota Water Science Center  
Email: [dc\\_sd@usgs.gov](mailto:dc_sd@usgs.gov)  
1608 Mt. View Rd.  
Rapid City, SD 57702  
Phone: (605) 394-3200  
Fax: (605) 355-4523
- National Center for Earth Resource Observation & Science  
Mundt Federal Building  
47914 252nd Street  
Sioux Falls, SD 57198-0001  
Phone: (605) 594-6511
- [USGS South Dakota Cooperative Fish and Wildlife Research Unit](#)  
Email:  
[sdsu\\_usgs\\_users@sdstate.edu](mailto:sdsu_usgs_users@sdstate.edu)  
Box 2140B, Northern Plains  
Biostress Lab  
Department of Wildlife and  
Fisheries Sciences  
South Dakota State University  
Brookings, SD 57007  
Phone: 605-688-6121  
Fax: 605-688-4515

## Tennessee

- [Tennessee Water Science Center](#)  
Email: [dc\\_tn@usgs.gov](mailto:dc_tn@usgs.gov)  
640 Grassmere Park Drive,  
Suite 100  
Nashville, TN 37211  
Phone: (615) 837-4700  
Fax: (615) 837-4799
- [USGS Tennessee Cooperative Fishery Research Unit](#)  
Email: [coopunit@tntech.edu](mailto:coopunit@tntech.edu)  
Box 5114  
Tennessee Tech University

Cookeville, Tennessee 38505  
Phone: 931-372-3094  
Fax: 931-372-6257

Phone: (435) 719-2331  
FAX: (435) 719-2350

## Texas

- [Texas Water Science Center](#)  
Email: [dc\\_tx@usgs.gov](mailto:dc_tx@usgs.gov)  
8027 Exchange Drive  
Austin, TX 78754-4733  
Phone: (512) 927-3500  
Fax: (512) 927-3590
- USGS Texas Cooperative Fish and Wildlife Research Unit  
Email: [txcoop@ttu.edu](mailto:txcoop@ttu.edu)  
Texas Tech University  
Ag Science Bldg, Room 218  
15th Street and Boston  
Phone: 806-742-2851  
Fax: 806-742-2946

## Utah

- [Utah Water Science Center](#)  
Email: [dc\\_ut@usgs.gov](mailto:dc_ut@usgs.gov)  
U.S. Geological Survey  
2329 Orton Circle  
West Valley City, UT 84119-2047  
Phone: (801) 908-5000  
Fax: (801) 908-5001
- [Utah Cooperative Fish and Wildlife Research Unit](#)  
Email: [utcoop@cnr.usu.edu](mailto:utcoop@cnr.usu.edu)  
Utah State University  
Logan, UT 84322-5210  
Phone: 435-797-2509  
Fax: 435-797-4025
- [USGS- Southwest Biological Science Center](#)  
Canyonlands Research Station  
2290 S.W. Resource Blvd  
Moab, UT 84532

## Vermont

- [New Hampshire/Vermont Water Science Center](#)  
Email: [dc\\_vt@usgs.gov](mailto:dc_vt@usgs.gov)  
361 Commerce Way  
Pembroke, NH 03275-3718  
Phone: (603) 226-7800  
Fax: (603) 226-7894
- USGS Vermont Cooperative Fish and Wildlife Research Unit  
Email: [vtcfwru@uvm.edu](mailto:vtcfwru@uvm.edu)  
310 Aiken Center School of Natural Resources  
University of Vermont  
Burlington, VT 05405  
Phone: 802-656-3011  
Fax: 802-656-8683

## Virginia

- USGS Headquarters  
Email: [ask@usgs.gov](mailto:ask@usgs.gov)  
USGS National Center  
John W Powell Building  
12201 Sunrise Valley Drive  
Reston, VA 20192  
Phone: 703-648-4000
- Virginia Water Science Center  
Email: [dc\\_va@usgs.gov](mailto:dc_va@usgs.gov)  
North Run VI  
1730 East Parham Road  
Richmond, VA 23228  
Telephone: (804) 261-2600  
Fax: (804) 261-2659
- USGS Virginia Cooperative Fish and Wildlife Research Unit  
Email: [vacfwrw@listserve.vt.edu](mailto:vacfwrw@listserve.vt.edu)  
106 Cheatham Hall  
Virginia Polytechnic Institute

and State University  
Blacksburg, VA 24061  
Phone: 540-231-4934  
Fax: 540-231-7580

Phone: (206) 526-6282  
Fax: (206) 526-6654

## Washington

- Western Regional Office  
Federal Office Building  
909 First Avenue, 8th Floor  
Seattle, WA 98104  
Phone: (206) 220-4600  
Fax: (206) 220-4624
- [Washington Water Science Center](#)  
Email: [dc\\_wa@usgs.gov](mailto:dc_wa@usgs.gov)  
Water Science Center Office,  
Wells Fargo Bank Building  
1201 Pacific Ave., Suite 600  
Tacoma, WA 98402  
Phone: (253) 428-3600  
Fax: (253) 428-3614
- David A. Johnston Cascades  
Volcano Observatory  
Columbia Tech Center  
1300 SE Cardinal Court, Bldg.  
10, Suite 100  
Vancouver, WA 98683-9589  
Phone: (360) 993-8900  
Fax: (360) 993-8980
- [Spokane Office, Mineral Resources](#)  
U.S. Geological Survey  
904 W Riverside Ave., Room  
202  
Spokane, WA 99201  
Phone: 509-368-3101
- Western Fisheries Research  
Center, Headquarters and  
Seattle Laboratory  
6505 NE 65th Street  
Seattle, Washington 98115

- [Washington Cooperative Fish and Wildlife Research Unit](#)  
Email:  
[washcoop@u.washington.edu](mailto:washcoop@u.washington.edu)  
University of Washington School  
of Aquatic & Fishery Sciences  
Fishery Sciences Building  
Box 355020  
Seattle, WA 98195-5020  
Phone: 206-543-6475  
Fax: 206-616-9012

## West Virginia

- [West Virginia Water Science Center](#)  
Email: [dc\\_wv@usgs.gov](mailto:dc_wv@usgs.gov)  
11 Dunbar St.  
Charleston, WV 25301  
Telephone: (304) 347-5130  
Fax: (304) 347-5133
- Leetown Science Center  
11649 Leetown Road  
Kearneysville, WV 25430  
Phone: (304) 724-4400  
Fax: (304) 724-4410
- USGS West Virginia  
Cooperative Fish and Wildlife  
Research Unit Division of  
Forestry - College of Agriculture  
and Forestry  
Email: [wvcoop@wvu.edu](mailto:wvcoop@wvu.edu)  
P. O. Box 6125  
313 Percival Hall  
West Virginia University  
Morgantown, WV 26506-6108  
Phone: 304-293-3794 x 2430  
Fax: 304-293-4826

## Wisconsin

- [Wisconsin Water Science Center](#)  
Email: [dc\\_wi@usgs.gov](mailto:dc_wi@usgs.gov)  
8505 Research Way  
Middleton, WI 53562-3581  
Phone: (608) 828-9901  
Fax: (608) 821-3817
- Upper Midwest Environmental Sciences Center (UMESC) West  
2630 Fanta Reed Road  
LaCrosse, WI 54603  
Phone: (608) 783-6451  
Fax: (608) 783-6066
- National Wildlife Health Center  
6006 Schroeder Road  
Madison, WI 53711-6223  
Phone: (608) 270-2400  
Fax: (608) 270-2415
- [USGS Wisconsin Cooperative Wildlife Research Unit](#)  
Email: [coopunit@uwmadmail.services.wisc.edu](mailto:coopunit@uwmadmail.services.wisc.edu)  
University of Wisconsin -  
Department of Wildlife Ecology  
Room 204 Russell Laboratories  
1630 Linden Drive  
Madison, WI 53706  
Phone: 608-263-4519  
Fax: 608-263-4519
- [USGS Wisconsin Cooperative Fishery Research Unit](#)  
Email: [coopfish@uwsp.edu](mailto:coopfish@uwsp.edu)  
College of Natural Resources  
University of Wisconsin -  
Stevens Point  
2100 Main Street  
Stevens Point, WI 54481-3897  
Phone: 715-346-2178  
Fax: 715-346-3624

## Wyoming

- [Wyoming Water Science Center](#)  
Email: [state\\_rep\\_wy@usgs.gov](mailto:state_rep_wy@usgs.gov)  
Lincolnway Building  
2617 East Lincolnway, Suite B  
Cheyenne, WY 82001  
Telephone: (307) 778-2931  
Fax: (307) 778-2764
- [Wyoming Cooperative Fish and Wildlife Research Unit](#)  
Email: [wyo-coop@uwyo.edu](mailto:wyo-coop@uwyo.edu)  
University of Wyoming  
Box 3166 - Biological Science  
Bldg. - Rm. 419  
Laramie, WY 82071  
Phone: 307-766-5415  
Fax: 307-766-5400

The communication chiefs for the three main USGS regions are:

**Eastern Region**

A.B. Wade

703-648-4483

[abwade@usgs.gov](mailto:abwade@usgs.gov)

**Central Region**

David Ozman

303-202-4744

[dozman@usgs.gov](mailto:dozman@usgs.gov)

**Western Region**

Stephanie Hanna

206-220-4573

[shanna@usgs.gov](mailto:shanna@usgs.gov)

## **CURRICULUM MATERIALS**

The Smithsonian recommends the following web-based curriculum resources for grades 5-8 and 9-12.

[http://www.nsrconline.org/curriculum\\_resources/index.html](http://www.nsrconline.org/curriculum_resources/index.html)

Check out curriculum resources from the National Science Resources Center.

<http://www.nsrconline.org/publications/index.html>

More educational information from the National Science Resources Center.

[http://www.earthfromspace.si.edu/lesson\\_plans.asp](http://www.earthfromspace.si.edu/lesson_plans.asp)

Plans specifically selected from the exhibition website

<http://education.usgs.gov/common/secondary.htm#satellite>

Hundreds of images and maps for secondary school students.

\*Your best resource for information, additional downloadable materials, and support about satellite imagery is available through USGS.

## **ADDITIONAL RESOURCES**

### **National Weather Service**

<http://www.nws.noaa.gov/education.php>

A comprehensive page of educational websites related to weather.

### **NASA Connect**

<http://connect.larc.nasa.gov/about.html>

A series of free programs integrating web sites, television programs, and an educator guide.

### **Space Science Education Resource Directory**

<http://teachspacescience.org/cgi-bin/ssrtop.plex>

An easy, fast way to find educational material, including lesson plans, classroom activities, and more.

### **General**

<http://www.education-world.com/standards/national/>

The national standards (Education World).

<http://www.dlese.org>

National Science Foundation's Digital Library for Earth Science Education.

<http://education.usgs.gov/common/secondary.htm#satellite>

Educational resources compiled by the U.S. Geological Survey for Middle and High School educators.

<http://science.hq.nasa.gov/education/>

Information about NASA's science education program.

<http://64.55.87.13/amsedu/>

Education information from the American Meteorological Society.

[http://eospsso.gsfc.nasa.gov/eos\\_homepage/for\\_educators/index.php](http://eospsso.gsfc.nasa.gov/eos_homepage/for_educators/index.php)

Earth Observing System educational information (Goddard Space Flight Center).

<http://www.mcps.k12.md.us/departments/eventscience/rs.index.html>

Remote sensing activities (Event-Based Science Project).

<http://oceancolor.gsfc.nasa.gov/SeaWiFS/TEACHERS/>

Resources for teachers related to the SeaWiFS monitor.

### **Kids: Fun and Interactive Websites**

#### **Spuzzled**

<http://spaceplace.nasa.gov/en/kids/landsat/index.shtml>

Learn about remote sensing while having fun putting puzzles of satellite images together!

#### **Play Pixel This**

[http://spaceplace.nasa.gov/en/kids/p\\_imager/pixel\\_this.shtml](http://spaceplace.nasa.gov/en/kids/p_imager/pixel_this.shtml)

Learn all about pixels and how satellite images are made!

#### **The National Map**

<http://nationalmap.gov/>

Find any place in the United States by clicking on the map!

#### **Student Resources**

[http://www.nsrconline.org/student\\_and\\_parent\\_resources/student\\_resources.html](http://www.nsrconline.org/student_and_parent_resources/student_resources.html)

Find resources suggested by the National Science Resources Center.

<http://science.hq.nasa.gov/kids/earth.html>

Games and activities about the earth (NASA).

<http://www.nasm.si.edu/ceps/outreach/earthday/>

Interpreting Satellite Images.

<http://www.fema.gov/kids/index.htm>

Materials, stories, and other resources for kids from FEMA. Check out the hurricane IQ quiz.

## Sample Participant Survey (available online)

<http://www.sites.si.edu/exhibitions/exhibits/earthFromSpacePosters/index.htm>

Click on "Participant Survey"

### *Earth from Space Poster Set*

To help SITES better serve you, we ask that you complete and return this form by October 1, 2008. Your feedback is critical to the success of future projects. Thank you in advance for your time.

### Please provide the name of your institution and its location:

Please provide  
the name of  
your institution  
and its  
location:

Address:

Address 2:

City/Town:

State:

ZIP/Postal  
Code:

Country:

### My institution is a:

- Library
- School
- Museum
- Other public facility

Other (please specify)

**Our primary audience is:**

- General public
- Students in grades 5-8
- Students in grades 9-12
- College students
- Other

**We are using the posters as a:**

- Teaching tool
- Exhibit presentation
- Visual resource

Other (please specify)

\*

**If the posters are being used as an exhibit, please provide details about:**

Attendance statistics

Public programming

Public relations efforts

**Please rate the educational value of the posters:**

- Limited value
- Moderately informative
- Useful

- Perfectly matched our needs

**Please rate the visual presentation of the posters:**

- Weak and confusing
- Acceptable
- Strong graphically
- Exceptional

**Please comment on the number of posters:**

- 20 was too many
- Not enough
- Seemed like the right size for the subject and presentation

**Please evaluate your use of the online resources:**

- Never looked at them
- Found the resources helpful
- Used everything provided

**Online curriculum materials:**

- Never looked at them
- Found the resources helpful
- Used everything provided

THANK YOU!

## Exhibition Collaborators



The USGS serves the nation by providing reliable scientific information to describe and understand the Earth; minimize loss of life and property from natural disasters; manage water, biological, energy, and mineral resources; and enhance and protect our quality of life.



Smithsonian Institution  
Traveling Exhibition Service

SITES has been sharing the wealth of Smithsonian collections and research programs with millions of people outside Washington, DC, for more than 50 years. SITES connects Americans to their shared cultural heritage through a wide range of exhibitions about art, science, and history, which are shown wherever people live, work and play. [www.sites.si.edu](http://www.sites.si.edu)

© 2008 Smithsonian Institution

***Host venues are invited to duplicate this handbook for their own use.***

Cover images: Lena Delta image Courtesy U.S. Geological Survey; Great Pyramids image Courtesy Arizona State University, NASA/ERSDAC | DigitalGlobe